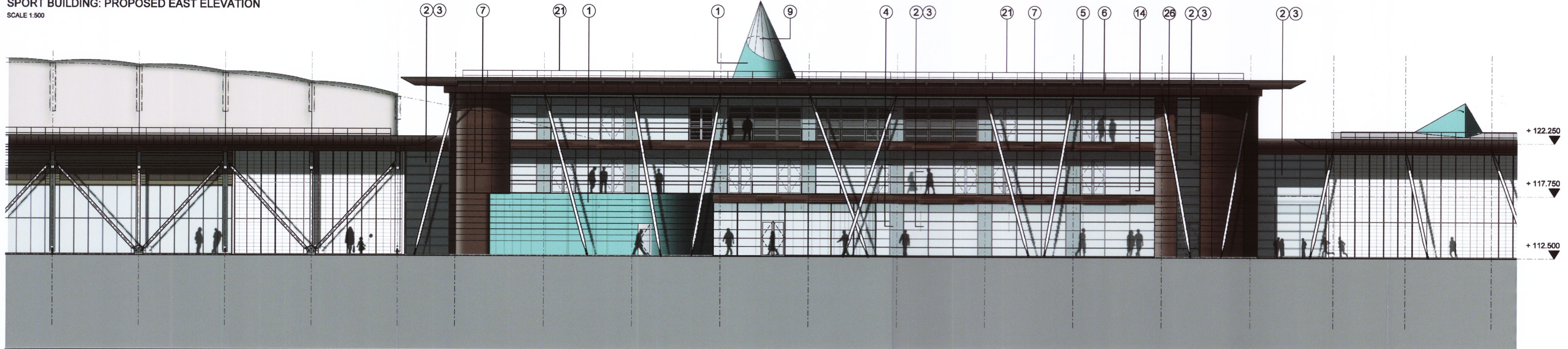


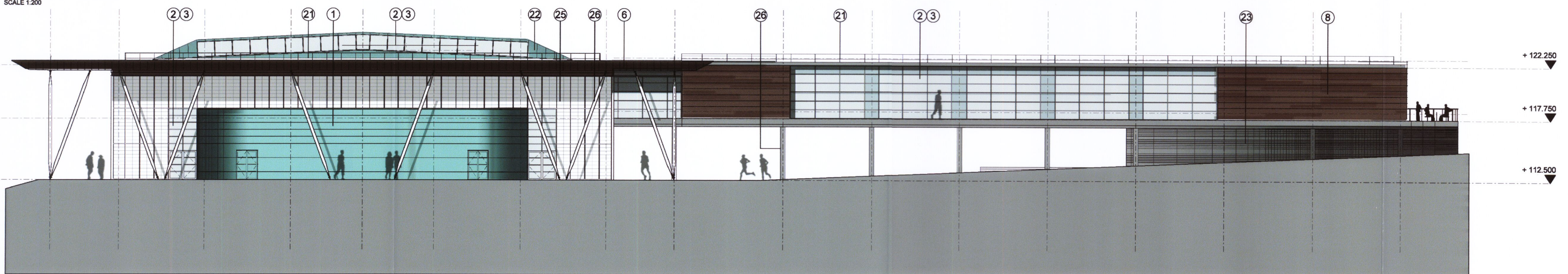
09003-450/01
SPORT BUILDING: PROPOSED EAST ELEVATION
SCALE 1:500



09003-450/02
SPORT HUB BUILDING: PROPOSED EAST ELEVATION
SCALE 1:200



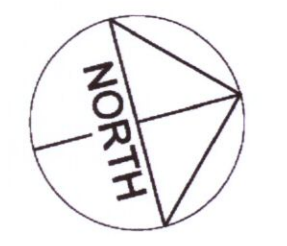
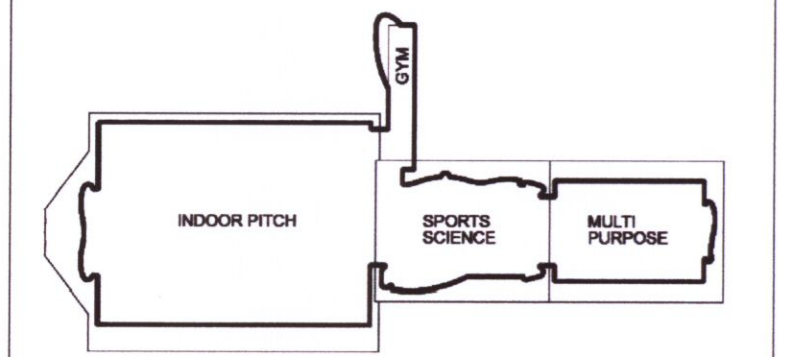
09003-450/03
MULTI PURPOSE HALL: PROPOSED EAST ELEVATION
SCALE 1:200



09003-450/04
MULTI PURPOSE HALL: PROPOSED NORTH ELEVATION
SCALE 1:200

Note:
1. To be read with CDM Risk Register
2. Do not scale, check this is the latest version, if in doubt, ask see drawing issue log for issue history

09003-450/05
Sports Elevation Location Plan
Scale: N1 S



MATERIALS LEGEND

- ① Pre patinated copper cladding
- ② PPC curtain walling
- ③ Sealed double glazed units
- ④ Sealed double glazed insulated spandrel panels
- ⑤ Bronze anodised aluminium louvre blades
- ⑥ Pre weathered brass cassette panels to soffit and fascias
- ⑦ Pre weathered brass strip cladding
- ⑧ Pre weathered brass plank cladding
- ⑨ Structural glazing (double glazed)
- ⑩ Stone cladding
- ⑪ Oak strip boarding cladding
- ⑫ Oak solar shading fins
- ⑬ ppc channel
- ⑭ Laminated glass balustrade
- ⑮ Galium column with engineered steel head and base connection details
- ⑯ Stainless steel bracing to porte cochere
- ⑰ Bronze screen to plant louvres
- ⑱ Roller shutter doors
- ⑲ ppc steel doornet
- ⑳ Standing seam metal deck roofing
- ㉑ Handrail: ppc 12 x50 flats
- ㉒ Prepatinated copper rooflight surround
- ㉓ ppc louvres
- ㉔ ppc rainscreen cassette cladding
- ㉕ Kalfwall cladding panels in ppc support framework
- ㉖ Painted steel columns with engineered head and base details
- ㉗ Opaque double glazed units
- ㉘ Timber louvres
- ㉙ Tensile opaque fabric roof covering
- ㉚ Gabion walling
- ㉛ Pressed stone walling

RECEIVED
24 FEB 2010
TIME:

ISSUED FOR PLANNING	20090212	MB	BF
Rev	Notes	Date	By

redboxarchitecture

Red Box Architecture, 21 Nicholas Chare, Newcastle upon Tyne, NE1 1RU
E: +44 (0)191 245 7105, F: +44 (0)191 245 7111, mail@redboxdesign.com, www.redboxdesign.com
Red Box Design Group Ltd trading as Red Box Architecture
redboxdesigngroup - redboxinteriors - redboxgallery

THE NATIONAL FOOTBALL CENTRE
ST GEORGE'S PARK

SPORTS BUILDING
Proposed Elevations

1:500/200	09 003	450_COL	-
A1	PLANNING		